

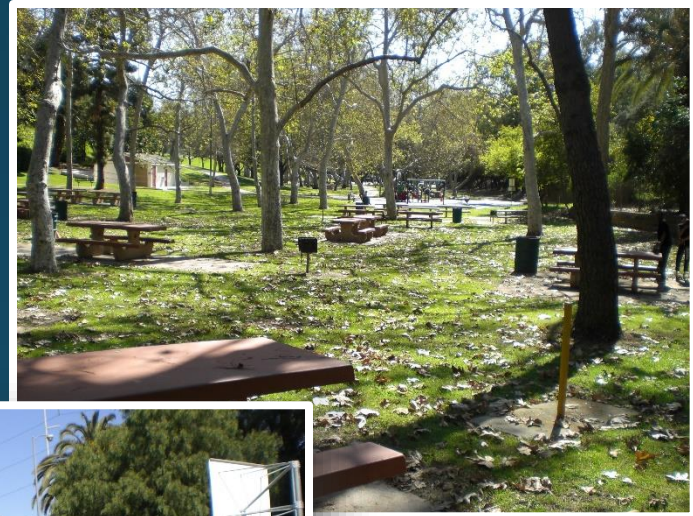
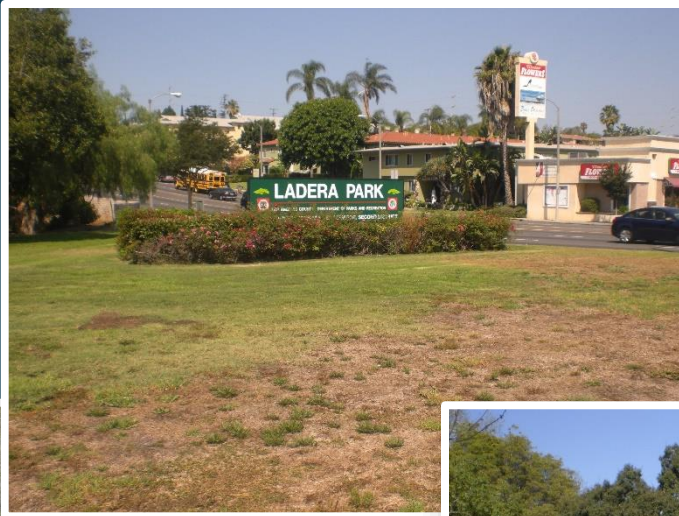
LADERA PARK REGIONAL STORMWATER CAPTURE PROJECT



LADERA PARK STORMWATER CAPTURE PROJECT

GENERAL PARK INFORMATION

- Location: Unincorporated County Area of Ladera Heights
- Ownership: Owned and Operated by County of LA Department of Parks and Recreations
- Park Area: 14.4 Acres



LADERA PARK STORMWATER CAPTURE PROJECT

STRATEGIES: CAPTURING STORMWATER



Natural Infiltration

Pre-
Development
Condition



Swale

Low Impact
Development
Features



Drought Tolerant
Landscaping

LADERA PARK STORMWATER CAPTURE PROJECT

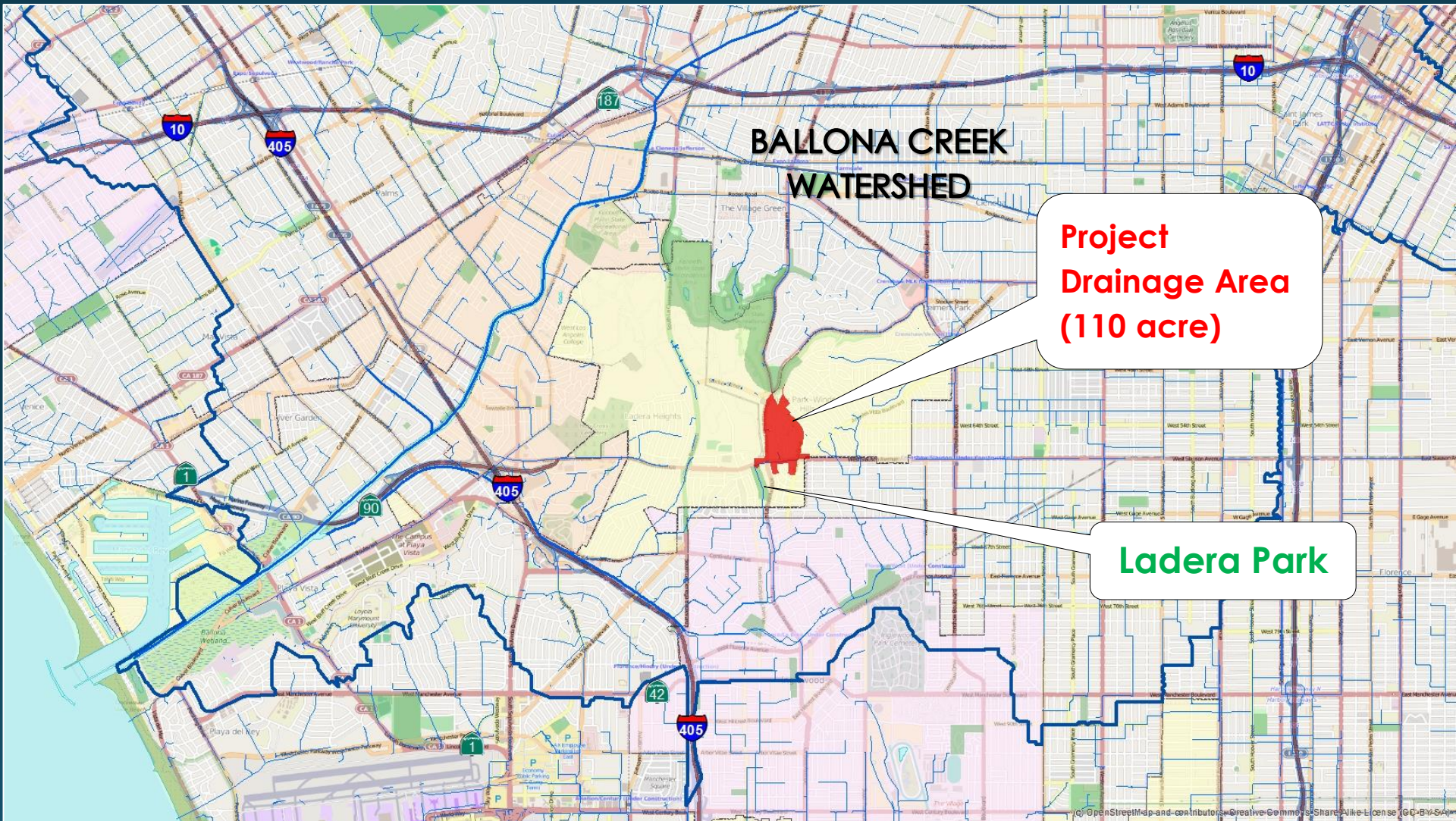
PROJECT CONCEPT OBJECTIVES

- Water Quality
- Water Supply
- Recreation
- Environment



LADERA PARK STORMWATER CAPTURE PROJECT

WATERSHED BACKGROUND



LADERA PARK STORMWATER CAPTURE PROJECT

HYDROLOGY

- 110 acre drainage area
- Highly Residential
- 5.1 acre-feet



Legend

Project Drainage Area: 110 acres

	46% Single Family Residential
	31% Secondary Roads
	9% Commercial
	6% Vacant
	5% Institutional
	2% Multi-Family Residential
	Ladera Park
	Storm Drain

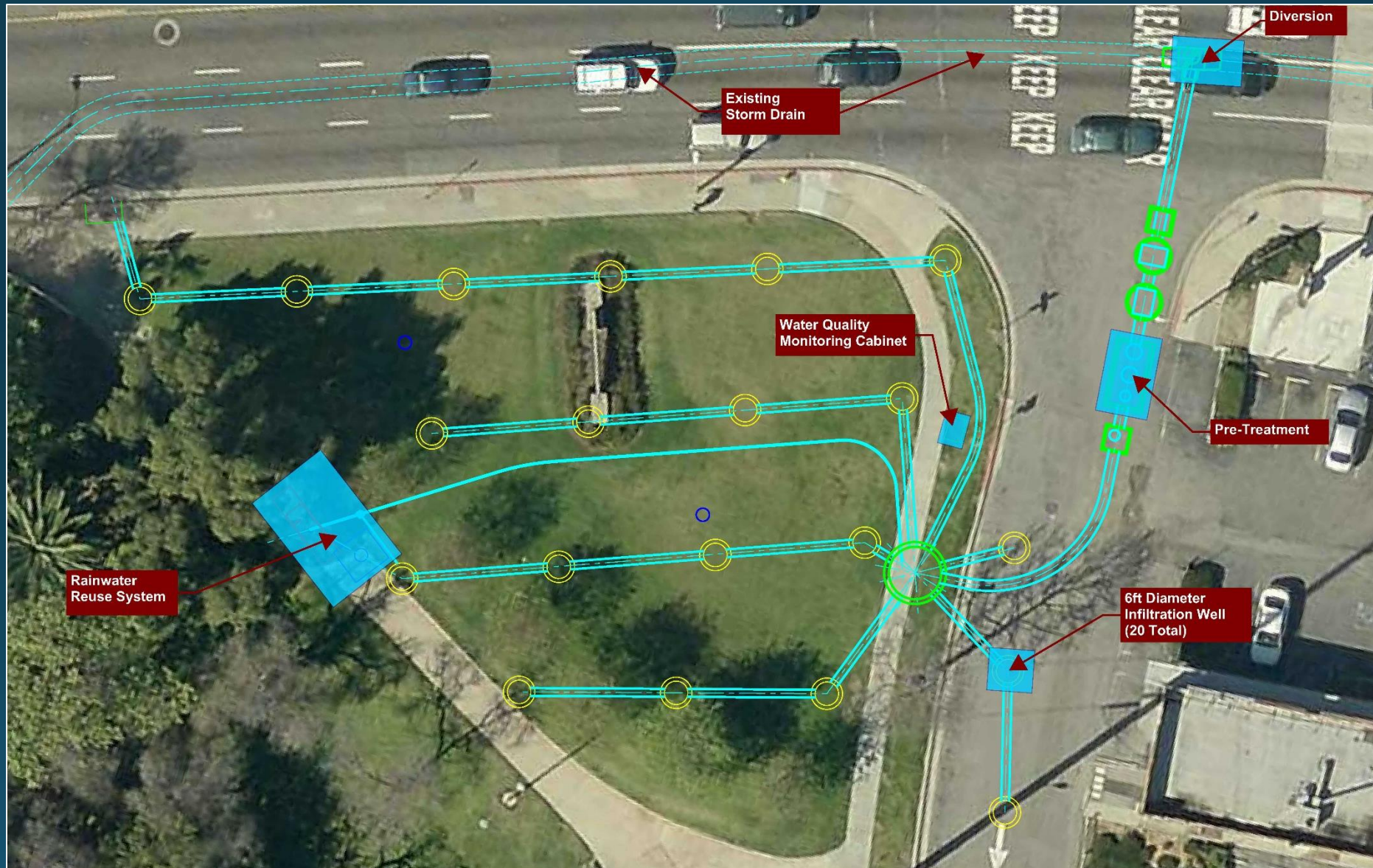
LADERA PARK STORMWATER CAPTURE PROJECT

SITE OVERVIEW



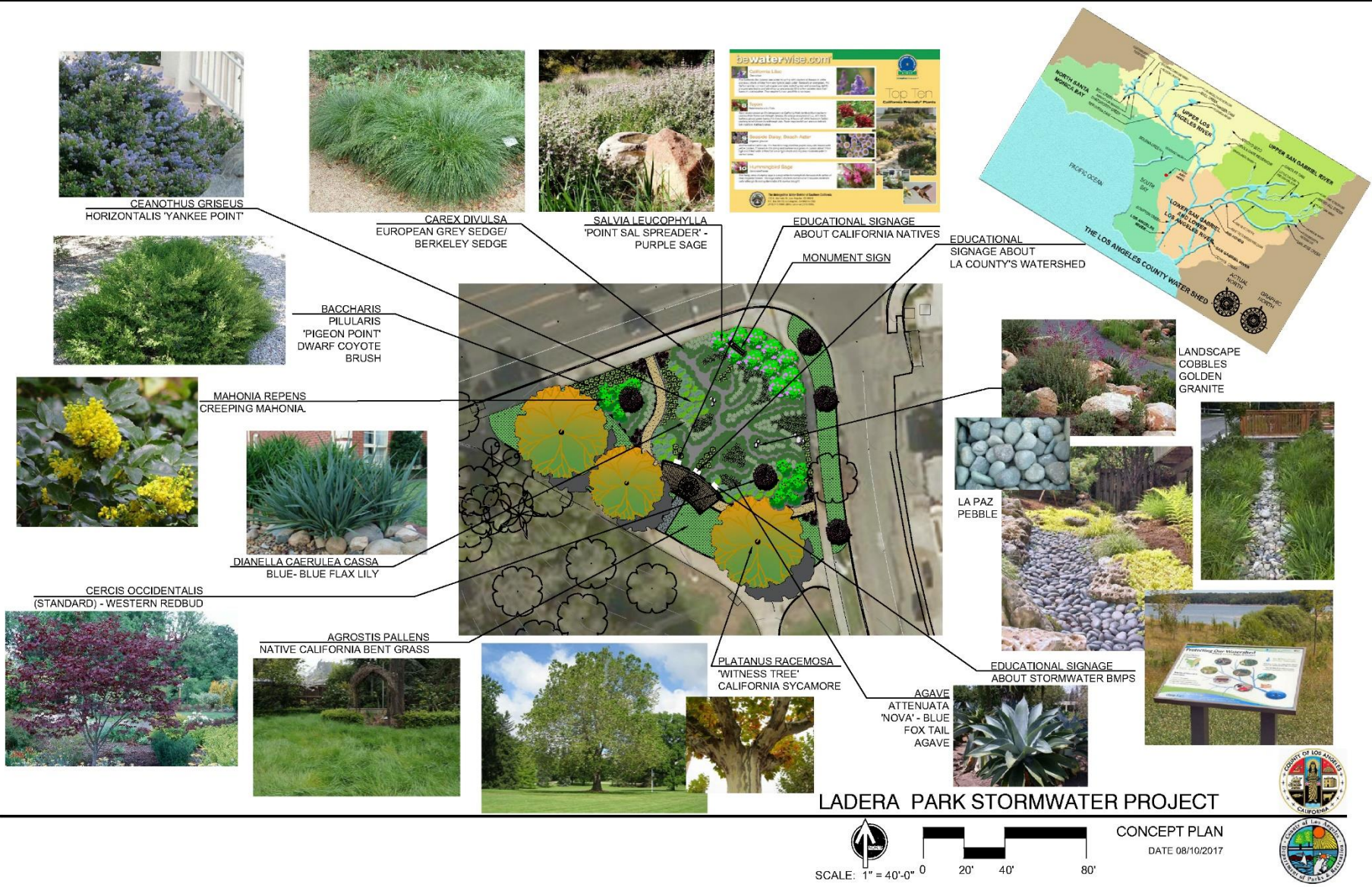
LADERA PARK STORMWATER CAPTURE PROJECT

PROJECT CONCEPT OVERVIEW



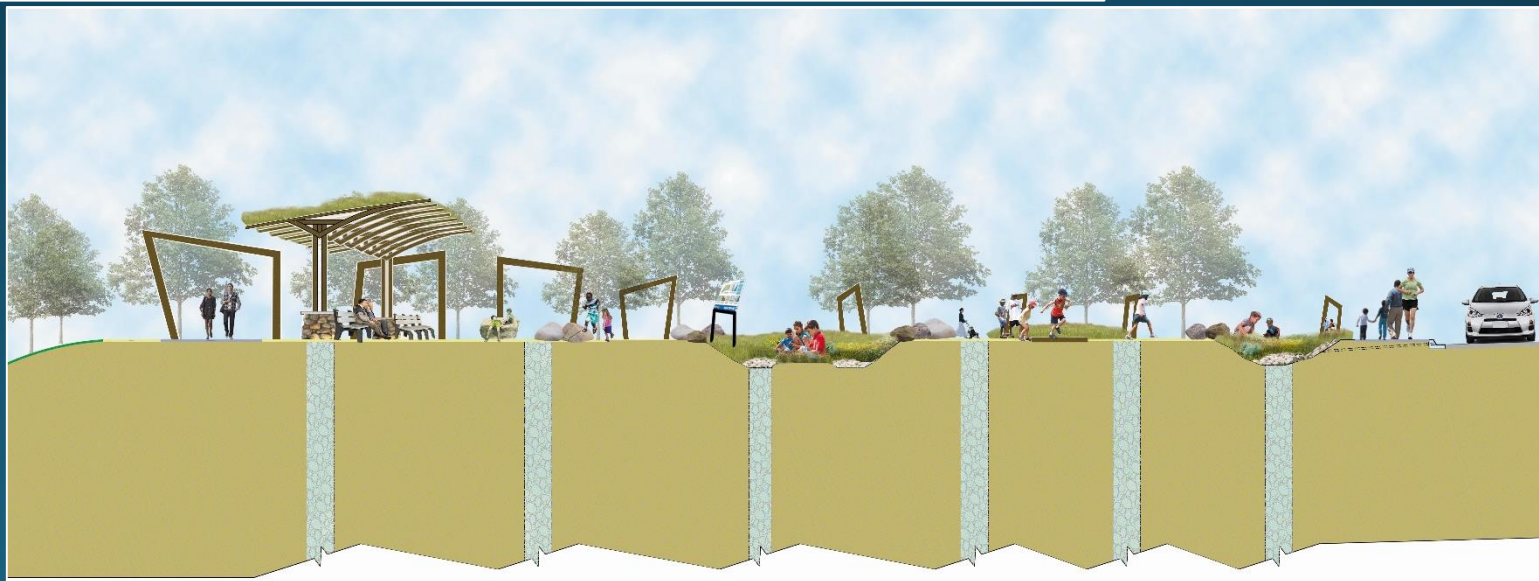
LADERA PARK STORMWATER CAPTURE PROJECT

PROJECT CONCEPT OVERVIEW



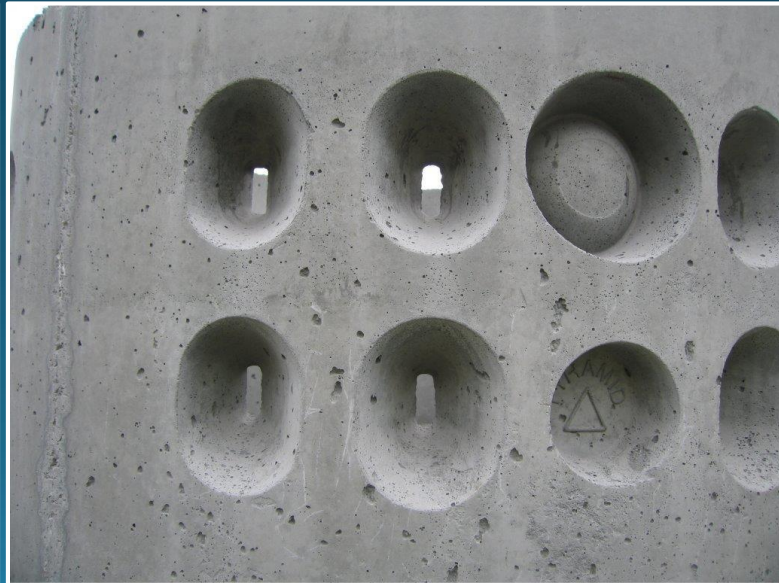
LADERA PARK STORMWATER CAPTURE PROJECT

CONCEPT DESCRIPTION



LADERA PARK STORMWATER CAPTURE PROJECT

INFILTRATION WELLS



LADERA PARK STORMWATER CAPTURE PROJECT

PROJECT SCHEDULE (TENTATIVE)

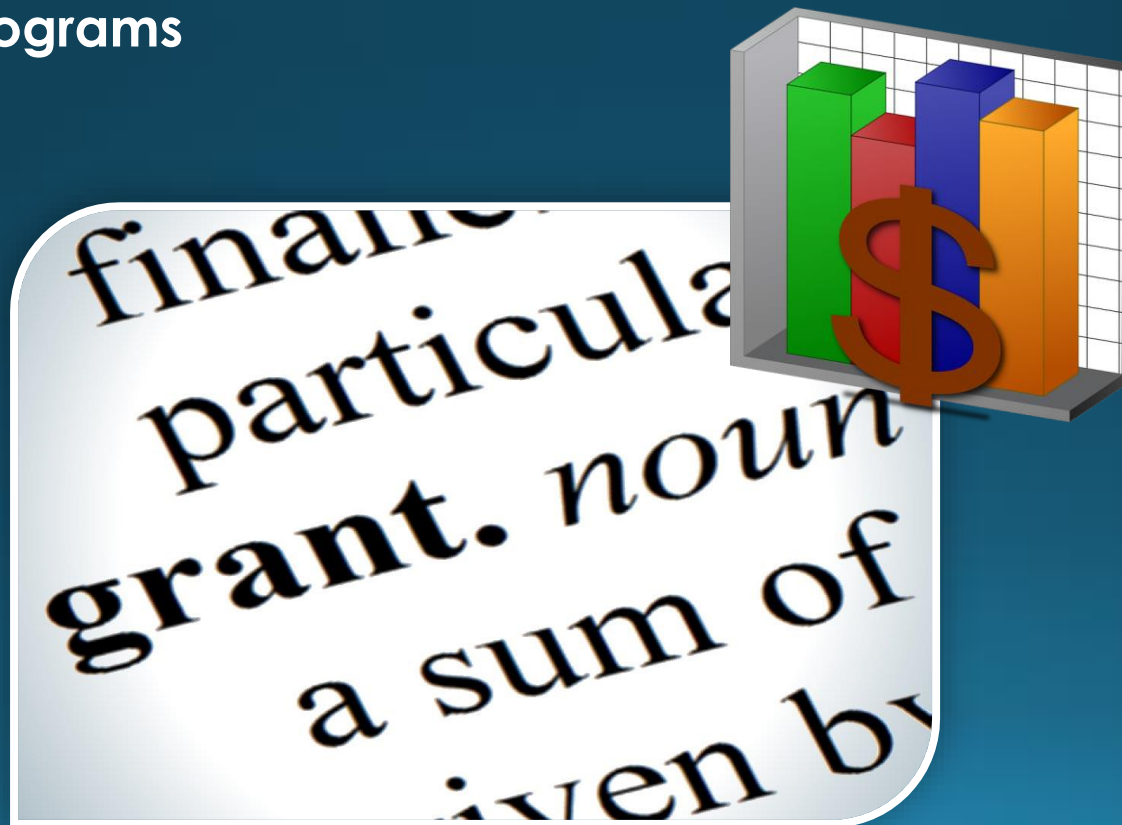
- **Start Construction- Winter 2019**
- **Project Completion- Summer 2019**



LADERA PARK STORMWATER CAPTURE PROJECT

PROJECT COST ESTIMATE

- Construction Costs: \$8M
- Recommended to receive Grants:
 - 50% from the Prop. 84 SMBRC Stormwater Grant Programs



LADERA PARK STORMWATER CAPTURE PROJECT

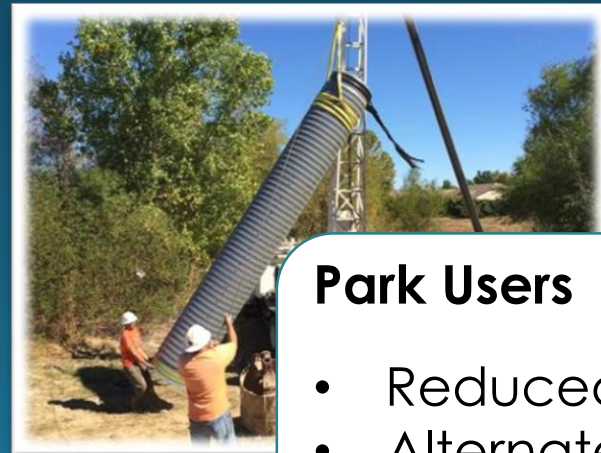
CONSTRUCTION IMPACTS

- Environmental CEQA Document available on project website
- Expected to start in Winter 2019 and go till Summer 2019
 - Tree removal in January
- Construction Hours: Monday-Friday, 7AM-4:30 PM
- Locations:
 - Slauson Ave. and Ladera Park Ave. will have one lane closed surrounding the project site
 - Construction along Slauson Ave. (diversion and drywells) will occur first



Residents

- Traffic
- Noise
- Dust



Park Users

- Reduced parking
- Alternate access

LADERA PARK STORMWATER CAPTURE PROJECT

QUESTIONS?

For more information, please contact:

Michelle Reed
Principal Civil Engineering Assistant
mreed@dpw.lacounty.gov
(626) 458-5963

Michael De Leon, PE
Capital Projects Manager
mdeleon@dpw.lacounty.gov
(626) 300-3290

WEBSITE: <https://dpw.lacounty.gov/go/Ladera>